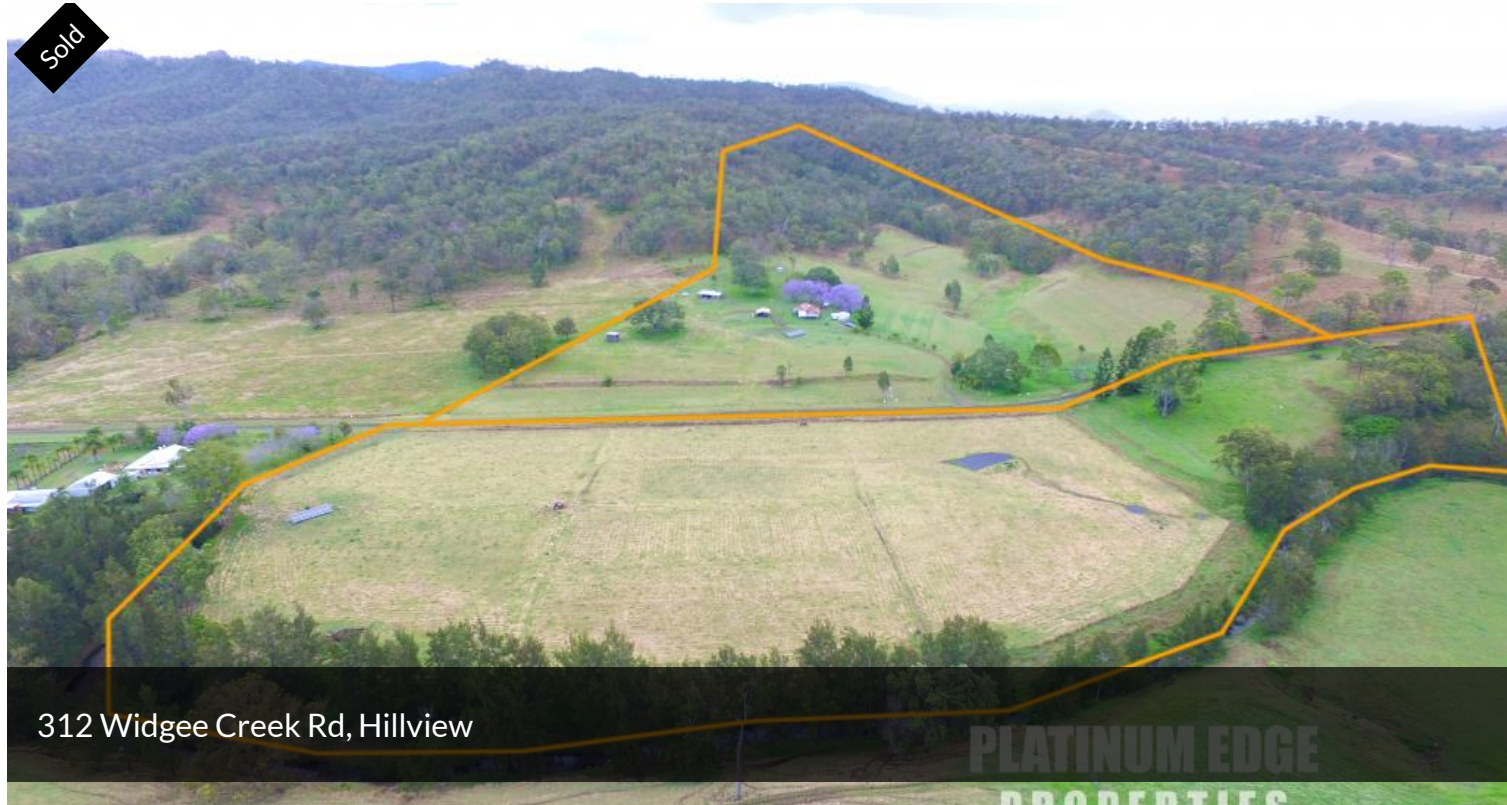


Sold



EXCELLENT LIFESTYLE, PRIVATE WITH MAJESTIC MOUNTAIN VIEWS AND COTTAGE ON 54 GLORIOUS ACRES.

312 Widgee Creek Road presents a gorgeous Lifestyle 2 Bedroom, 1 Bathroom Cottage with mountain views from anywhere you look. This property comes with two (2) Freehold Titles which includes 54 Acres of useable land for cattle, small crops, horses and more.

Plenty of great spots to Build your Dream Home, Private Location.

The Cottage

2 Bedroom, 1 Bathroom Cottage with Mountain Views all-round, rock swimming pool

39 Useable Acres (54 Acres Total) approx. 15 acres ready for Small Crops, Horses, Cattle

Water Bore from Cultivation Flats used to pump up to house – Better than Bottled Water!

Another Water Bore is Cased (needs pump)

🏠 2 🚿 1 🚗 4 📄 54.00 ac

Price SOLD for \$1,340,000

Property Type Residential

Property ID 625

Land Area 54.00 ac

AGENT DETAILS

Ben Eggenhuizen - 0422 041 878

Peter Eggenhuizen - 0413 744 450

OFFICE DETAILS

Beautesert

SHOP 7 61-85 Brisbane St

Beautesert, QLD, 4285 Australia

0413 744 450

PLATINUM EDGE
PROPERTIES

Cultivation

15 Acre (54 Acres Total) Cultivation Flats with 450m Creek Frontage with access

Separate Freehold Title

Ready for small crops, vegetables or maybe grow Lucerne, excellent property for Horses or cattle

Two house pads cut overlooking the flats with Mountain Views

2 x 5kw Freestanding Solar Systems

Bore in use (Excellent Drinking water) use on both Titles, Pumps to House

25 minutes from Beaudesert as well as 5 minutes from the Hillview State School and only approx. 80min to Gold Coast and Brisbane Airports.

Call Today! 0413 744 450

The above information provided has been furnished to us by the vendor/s. We have not verified whether or not that information is accurate and do not have any belief in one way or the other in its accuracy. We do not accept any responsibility to any person for its accuracy and do no more than pass it on. All interested parties should make and rely upon their own inquiries in order to determine whether or not this information is in fact accurate.